

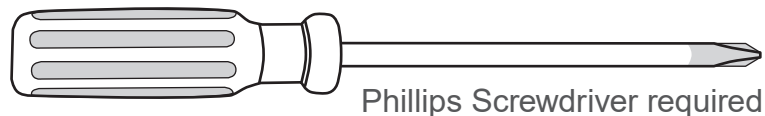
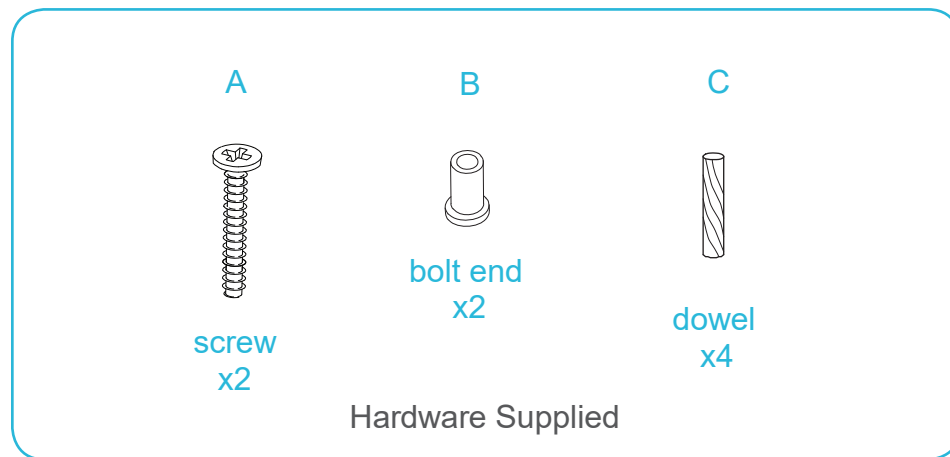
# Wooden Playgym

## Assembly Instructions

Thank you for your purchase.  
Please follow the instructions below for correct assembly.

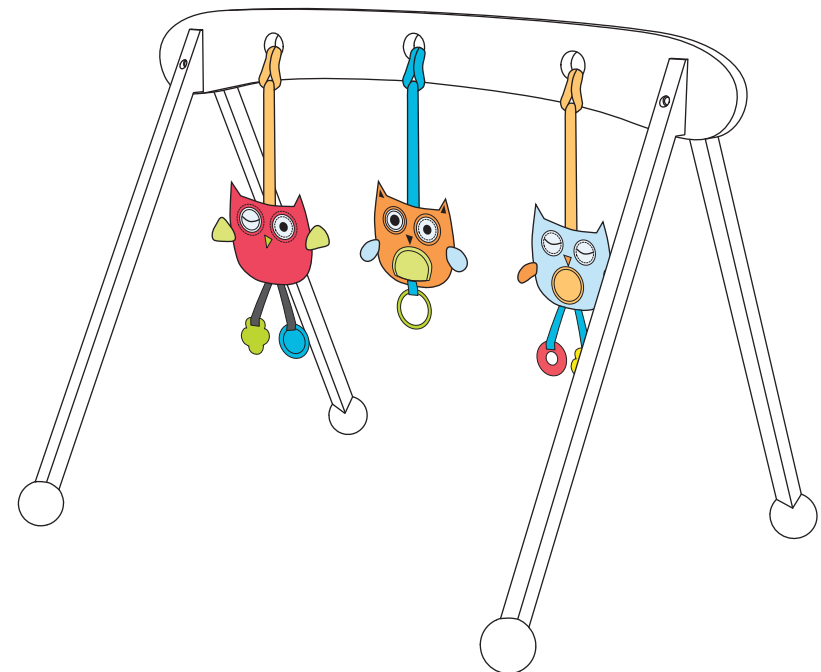
# mocka

Suitable for ages 0-18 months



### WARNING:

Never leave your baby unattended while under the playgym.  
Recommended use is from newborn age.  
We do recommend once your baby is rolling over, is at sitting age, or up on hands & knees that close supervision is made at all times.  
Please make regular checks of the playgym for loose parts, broken pieces or sharp edges.  
Small broken parts can cause a choking hazard.  
Use a damp cloth for cleaning rather than household cleaners.



**Warning:** Small parts are used to assemble the Playgym and should only be assembled by an adult. Keep all assembly parts away from small children.

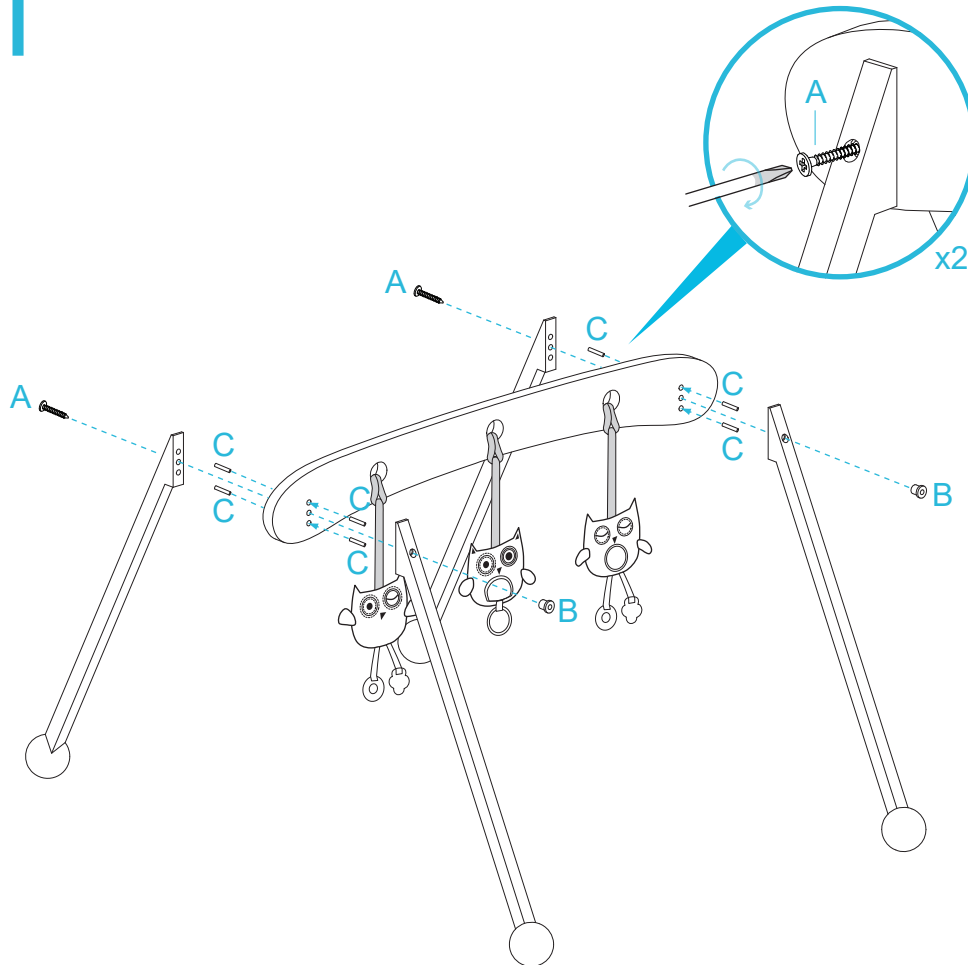
ALL nuts and bolts must be checked and tightened before first use. Regularly check all screws are tight to ensure safety.

# Wooden Playgym

## Assembly Instructions

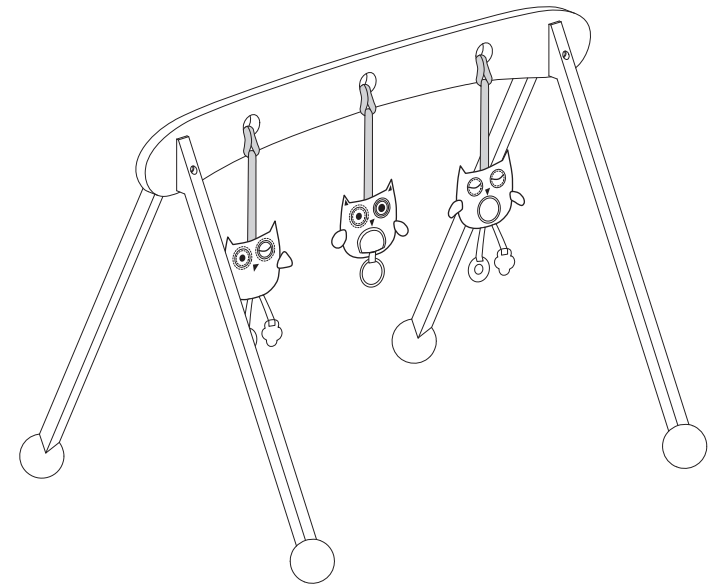
mocka

1



Assemble the playgym by attaching two legs to each side of the cross-bar using a screw (A) and bolt end (B) with 2x dowels (C). Tighten screws with a screwdriver.

2



Ensure all screws and bolts are secured before and during use. You're done, enjoy!