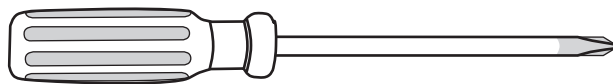
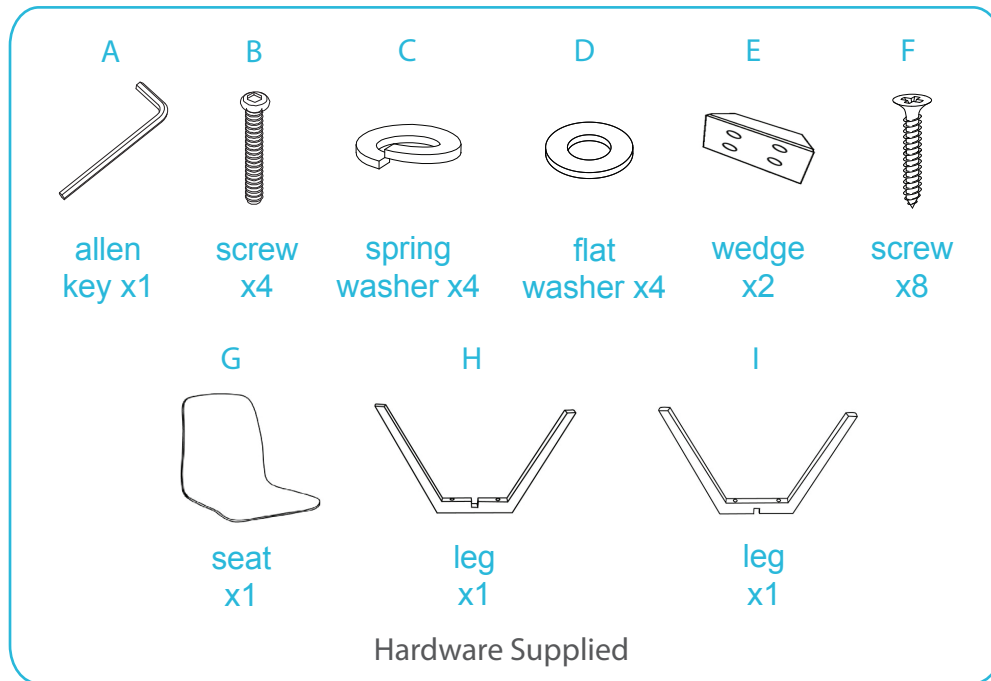


Adele Chair

Assembly Instructions

Thank you for your purchase.
Please follow the instructions below for correct assembly.

mocka



Phillips screwdriver required

For quicker assembly, we recommend the use of a power drill on a low-speed setting.

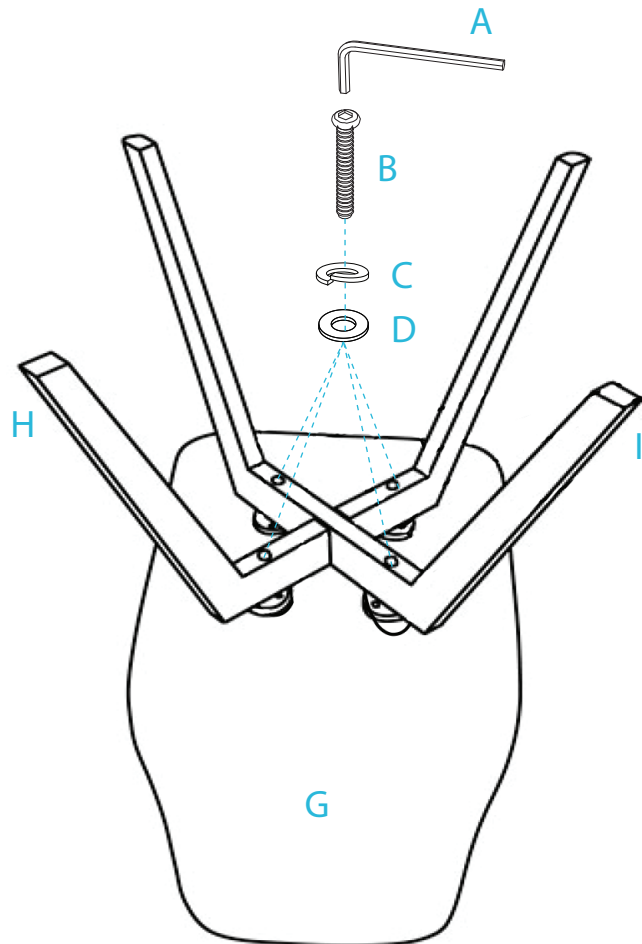


Adele Chair

Assembly Instructions

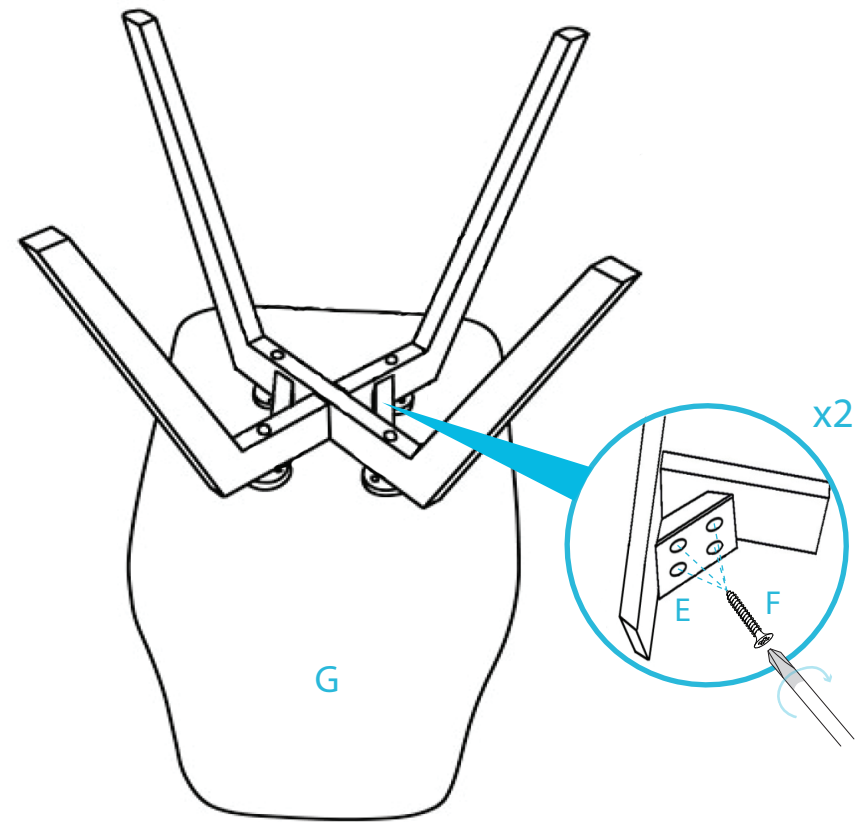
mocka

1



Attach the legs (H) and (I) to the seat (G) using 4x screws (B), 4x spring washers (C) and 4x flat washers (D). Tighten with the allen key (A).

2



Attach 2x wedges (E) between the legs as shown and secure with 8x screws (F). Tighten with a screwdriver. Carefully turn the chair over onto its legs, ensuring it is balanced and steady before use. You're done, enjoy!