

Elliot Pinboards

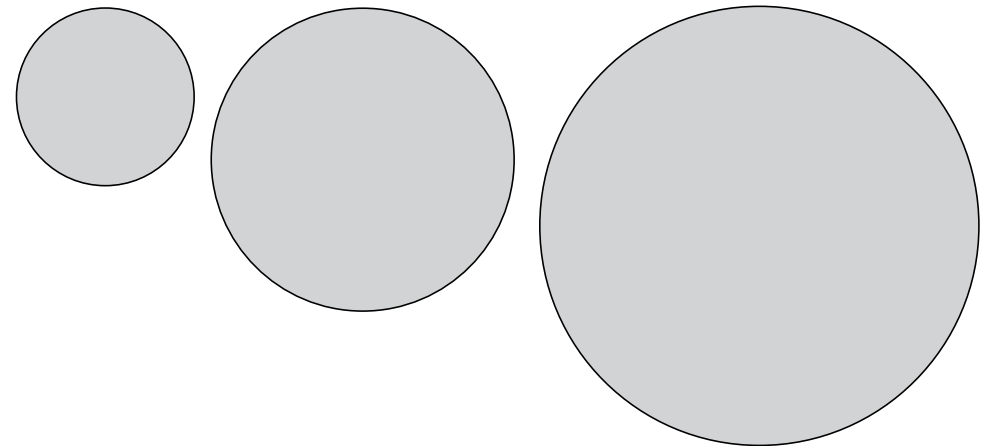
Assembly Instructions

mocka

Thank you for your purchase.
Please follow the instructions below for correct assembly.



WARNING: Small parts are used to mount the Pinboard.
Keep all small parts away from children.
Adult assembly only.



Important tips to follow when applying 3M Velcro

1. Wait 7 days after painting before use
2. Do not apply 3M Velcro to paper or soft surfaces on the wall
3. Remove any hanging hardware from the wall
4. Each pair of strips can hold 0.45KG

WARNING: Failure to follow instructions carefully may cause damage.

Elliot Pinboards

Assembly Instructions

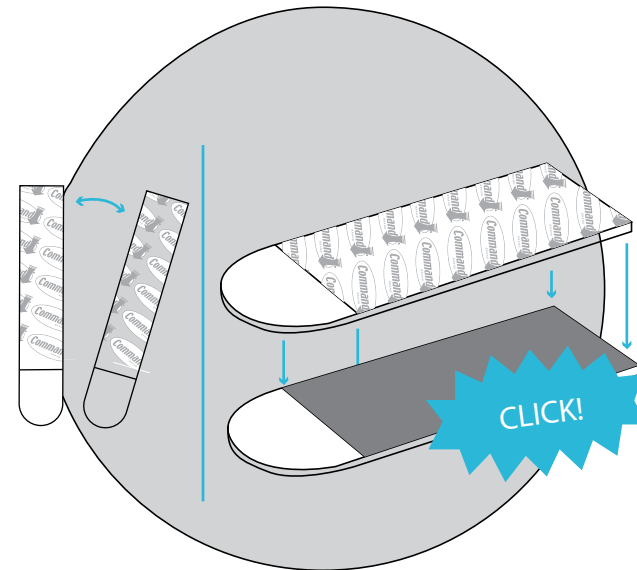
mocka

1



Clean the wall with rubbing alcohol. Don't use household cleaners like wipes or sprays because they leave behind a slippery residue.

2



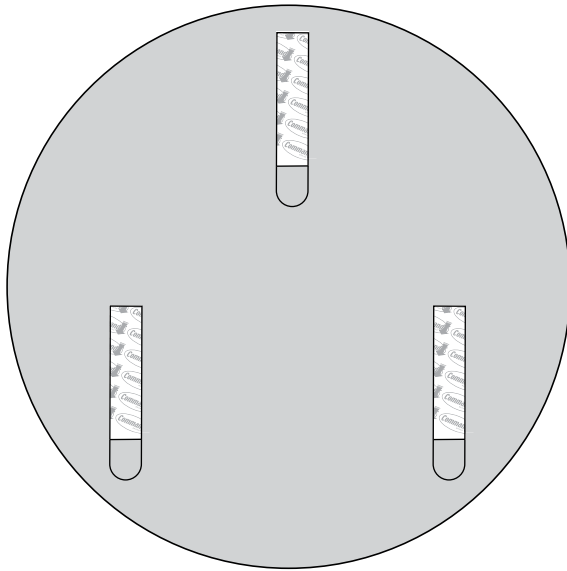
Separate strips. Press two strips together until they click.

Elliot Pinboards

Assembly Instructions

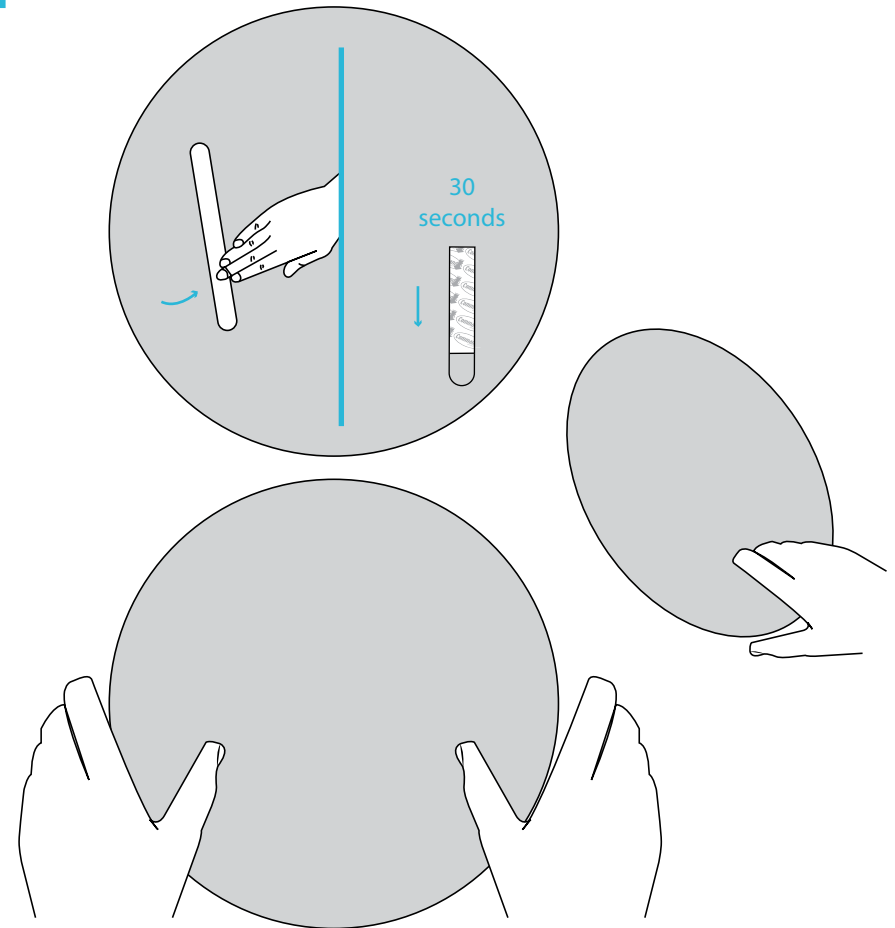
mocka

3



Arrange the strips on the back of the Pinboard, two for the smaller size and 3 each for the larger sizes. Remove one side of the cover on the strip. Place the sticky side of the strips on the surface of the pinboard. Press down firmly.

4



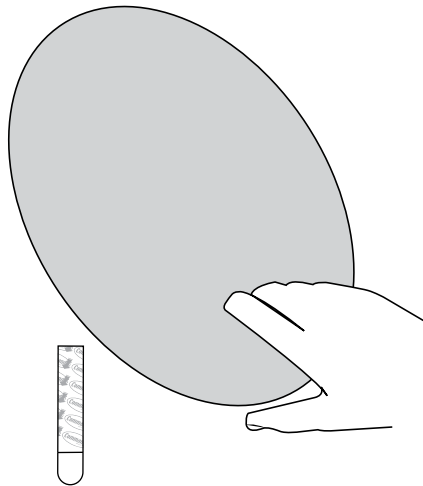
Remove the cover from the other side of the strips and press the Pinboard onto the wall. Press down firmly on each strip and hold in place for 30 seconds. You're done, enjoy!

Elliot Pinboards

Assembly Instructions

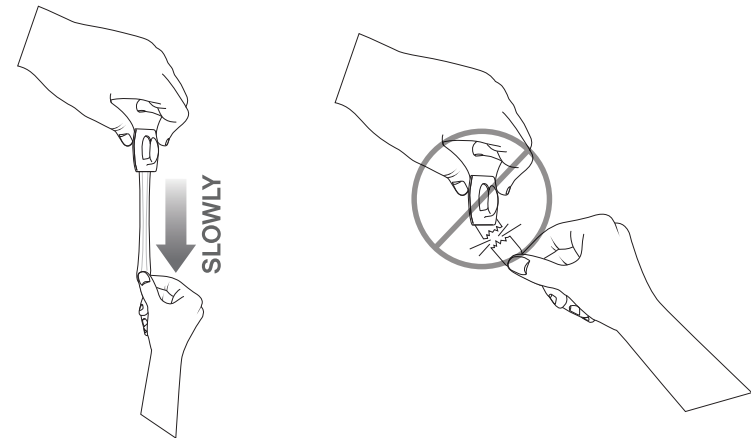
mocka

5 Removal



Grab the bottom corner of the Pinboard and gently peel out and upwards away from the wall.

6



To remove the strips from the wall, slowly pull the tab straight down. Stretch the tab slowly against the wall for at least 12 inches to release. Never pull the tabs towards you as they will break and damage the wall!